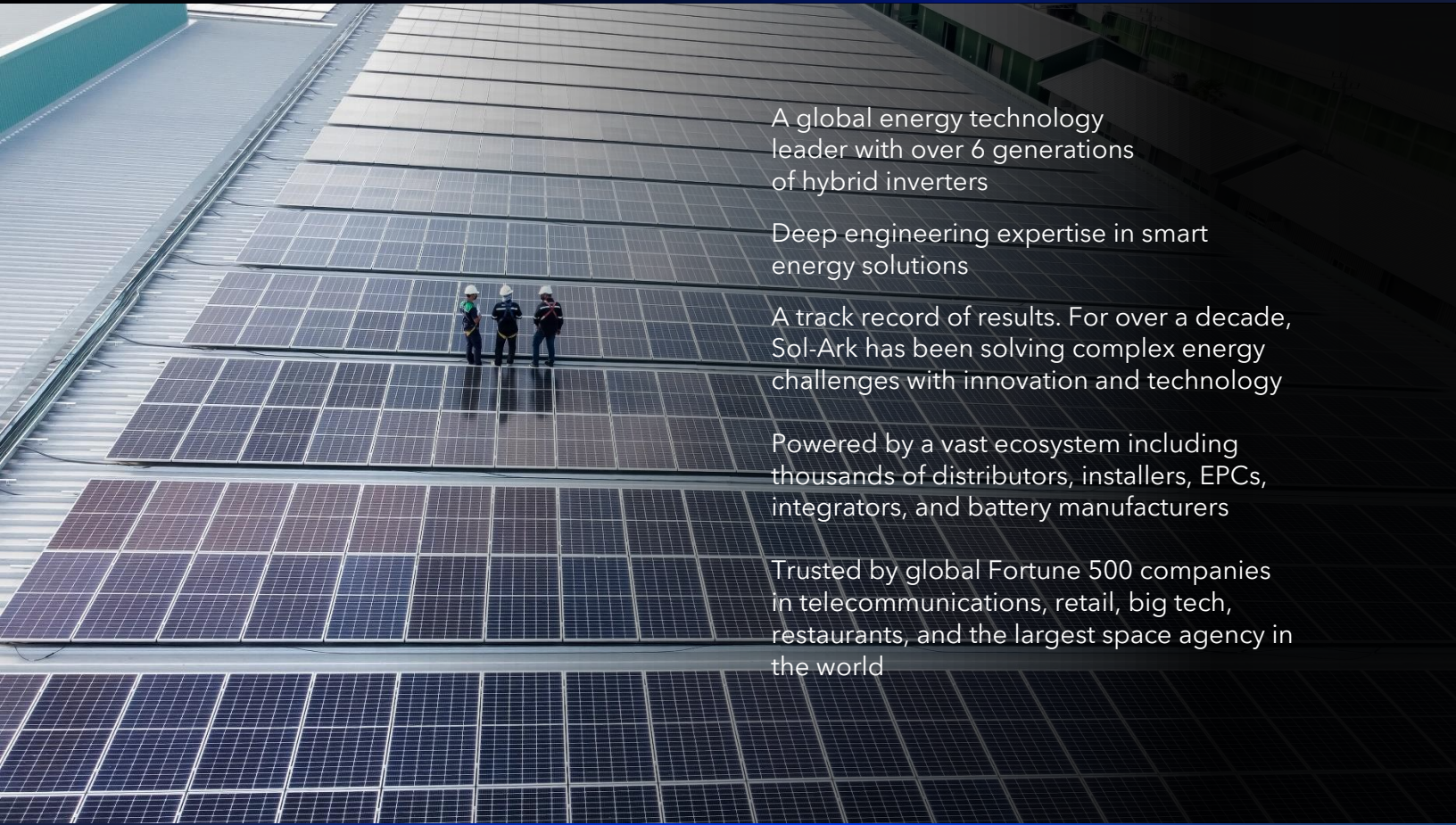




Sol-Ark Commercial Energy Solutions



A global energy technology leader with over 6 generations of hybrid inverters

Deep engineering expertise in smart energy solutions

A track record of results. For over a decade, Sol-Ark has been solving complex energy challenges with innovation and technology

Powered by a vast ecosystem including thousands of distributors, installers, EPCs, integrators, and battery manufacturers

Trusted by global Fortune 500 companies in telecommunications, retail, big tech, restaurants, and the largest space agency in the world

DATASHEET

30K-208V

C&I Hybrid Inverter

Inverter Model:

30K-3P-208V

SKU:

30K-3P-208V

| Input Data (PV) | |
|--|--|
| Max. Allowed PV Power (STC) | 39,000W |
| MPPT Voltage Range | 150-500V |
| Startup Voltage | 180V |
| Max. Input Voltage ¹ | 550V |
| Max. operating input current per MPPT | 36A |
| Max. short circuit current per MPPT | 55A |
| No. of MPP Trackers | 4 |
| No. of PV Strings per MPPT | 2 |
| Max. AC Coupled Input | 51,800W |
| Output Data (AC) | |
| Nominal AC Voltage (3Φ) | 120/208V |
| Grid Frequency | 50 / 60Hz |
| Real Power, max continuous (3Φ) | 30,000W |
| Max. Output Current | 83.4A |
| Peak Apparent Power (10s, off-grid, 3Φ) | 45,000VA |
| Max. Grid Passthrough Current (10min) | 200A |
| Continuous Grid Passthrough Current | 180A |
| Power Factor Output Range | +/- 0.8 adjustable |
| Backup Transfer Time | 5ms (adjustable) |
| CEC Efficiency | 96.5% |
| Max Efficiency | 97.5% |
| Design (DC to AC) | Transformerless DC |
| Stackable | Up to 10 in parallel |
| Battery Input Data (DC) | |
| Battery Chemistry | Lithium iron phosphate |
| No. of Battery Inputs | 2 |
| Battery Input Terminal Rating | 50A |
| Nominal DC Voltage | ≥300V |
| Operating Voltage Range | 160 - 500V |
| Battery Capacity Range | 50 – 9900Ah |
| Max. Battery Charge / Discharge Current | 100A (50A per input) |
| Charge Controller Type | 3-Stage with Equalization |
| Grid to Battery Charging Efficiency | 96.0% |
| Automatic Generator Start (AGS) | 2 Wire Start - Integrated |
| BMS Communication ² | CANBus & RS485 |
| General Data | |
| Dimensions (H x W x D) | 894 x 528 x 295 mm (35.2 x 20.8 x 11.6 in) |
| Weight | 80 Kg / 176 lb. |
| Enclosure | IP65 / NEMA 3R |
| Ambient Temperature | -40 – 60°C, >45°C Derating |
| Noise | < 30 dB @ 25°C (77°F) |
| Idle Consumption - No Load | 60W |
| Communication and Monitoring | Wi-Fi & LAN Hardware Included |
| Warranty ³ | 10 Years (15 Years) |
| Category | |
| Certifications and Listings (Grid Support Interactive Inverter) | UL 1741-2021 (UL1741SB), CSA C22.2 No 107.1-16, IEEE 1547-2018 & 1547a-2020 & 1547.1-2020 (SRD V2.0), UL 1741 CRD-PCS, UL1699B, CEC, SGIP ⁴ |
| PV DC Disconnect Switch – NEC 240.15 | Integrated |
| Ground Fault Detection – NEC 690.5 | Integrated |
| PV Rapid Shutdown Control – NEC 690.12 | Integrated |
| PV Arc Fault Detection – NEC 690.11 | Integrated |
| PV Input Lightning Protection | Integrated |
| PV String Input Reverse Polarity Protection | Integrated |
| Surge Protection | DC Type II / AC Type III |

1. See Installation Guide for more details on sizing array strings. The highest input voltage is based on the open-circuit voltage of the array at the minimum design temperature.

2. Active BMS communication is required for all lithium batteries. A list of compatible batteries can be found on our website.

3. 5-year extension is available for purchase by registered Gold level installers only.

4. Currently pending listing.