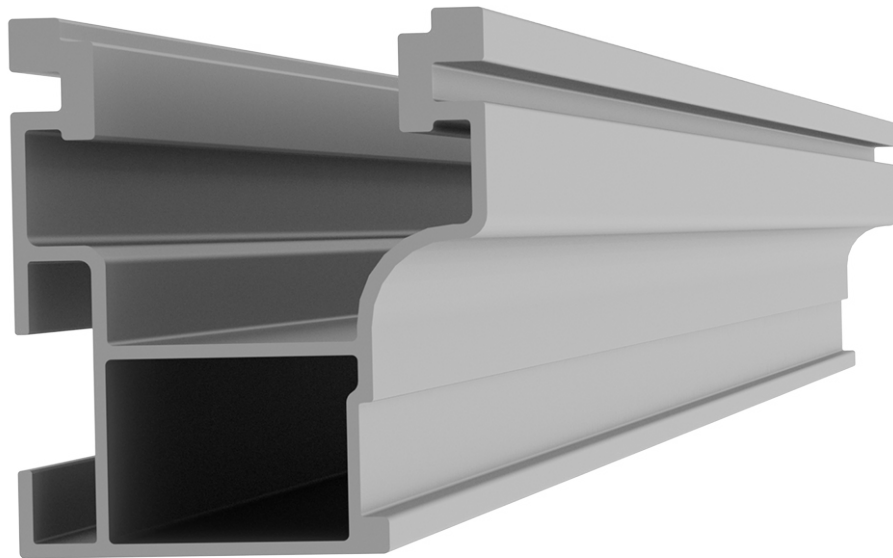


# CrossRail 44-X



## DATA SHEET



Part Number	Description
4000019	CrossRail 44-X 166", Mill
4000020	CrossRail 44-X 166", Dark
4000021	CrossRail 44-X 180", Mill
4000022	CrossRail 44-X 180", Dark
4000719	CrossRail 44-X 172", Mill
4000720	CrossRail 44-X 172", Dark
4000721	CrossRail 44-X 185", Mill
4000722	CrossRail 44-X 185", Dark
4000143	SPO CrossRail 44-X 86", Mill



# TECHNICAL DATA

## Mechanical Properties

	CrossRail 44-X
Material	6000 Series Aluminum
Ultimate Tensile Strength	37.7 ksi (260 MPa)
Yield Strength	34.8 ksi (240 MPa)
Weight	.47 lbs/ft (0.699 kg/m)

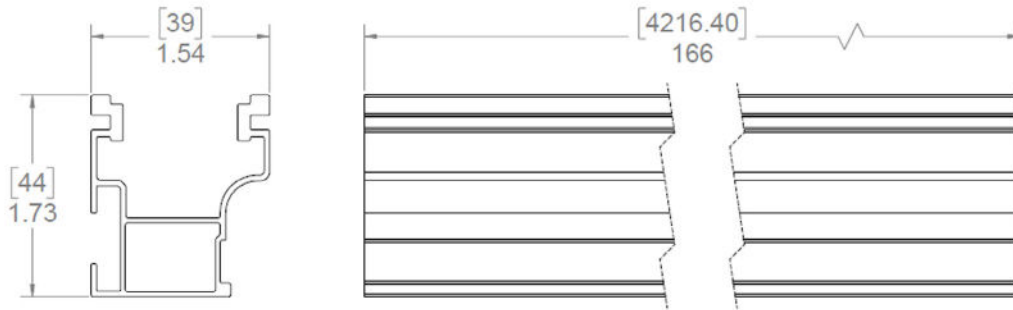
## Sectional Properties

	CrossRail 44-X
Sx	0.149 in <sup>3</sup> (0.3785 cm <sup>3</sup> )
Sy	0.145 in <sup>3</sup> (0.3683 cm <sup>3</sup> )
A (X-Section)	0.405 in <sup>2</sup> (1.0287 cm <sup>2</sup> )

LOAD		RAIL SPAN								
SNOW (psf)	WIND (mph)	32"	4'	64"	6'	80"	8'	112"	10'	12'
0	120									
0	140									
0	160									
10	120									
10	140									
10	160									
20	140									
20	160									
30	160									
40	160									
80	160									
100	160									

44X/MAX    48X    48XL    CR80

Units: [mm] in



Notes:

- ▶ Structural values and span charts determined in accordance with Aluminum Design Manual and ASCE 7-16
- ▶ UL2703 Listed System for Fire and Bonding